



jordan fishwick

Royal Road Disley Stockport



Royal Road Disley Stockport SK12 2BS

£290,000



The Property

Set back from the road and overlooking a delightful green full of Cherry Blossom trees, an extended three bedroom semi-detached family home. Ideally positioned for Disley Primary School, railway station and village. Pvc double glazing, gas central heating and private enclosed garden with Indian Stone paved patio and water feature. Comprising: ent hall, downstairs wc, living room, sitting/dining room, conservatory, contemporary 22ft breakfast kitchen, three first floor bedrooms, bathroom with white suite and separate wc. Viewing highly recommended.



- Extended Semi-Detached
- Three Bedrooms
- Set Back From The Road
- Private Enclosed Garden
- Pvc Double Glazing and Gas Central Heating
- Living Room, Dining/Sitting Room
- 22ft Breakfast Kitchen
- Useful Conservatory
- Ideal For Disley Village

Postcode SK12 2BS

EPC Rating D

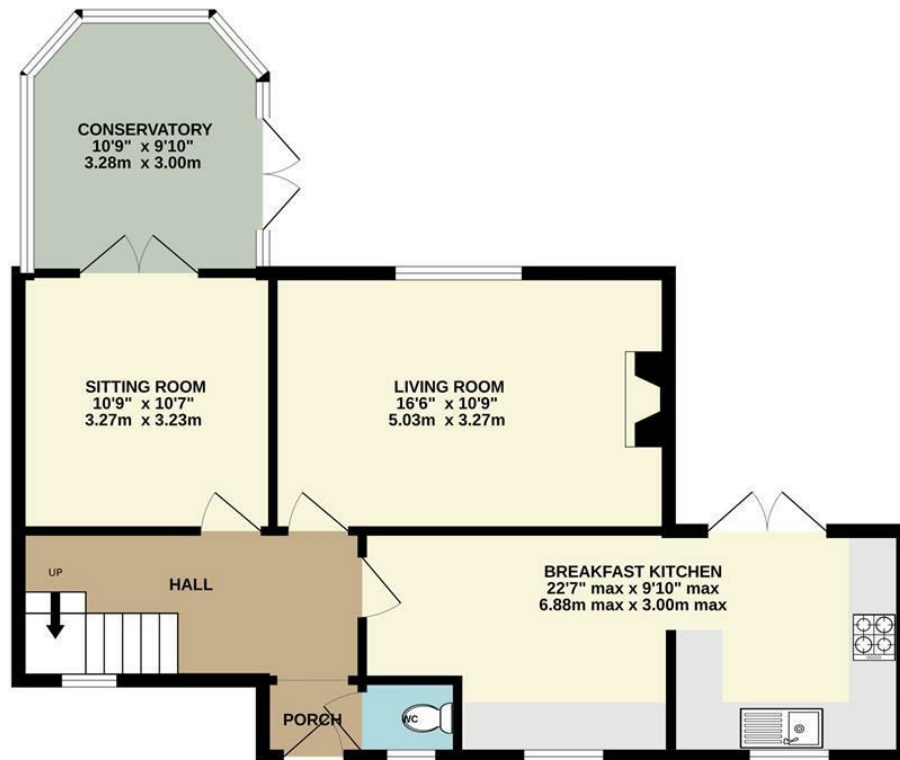
Local Authority Cheshire East

Council Tax C

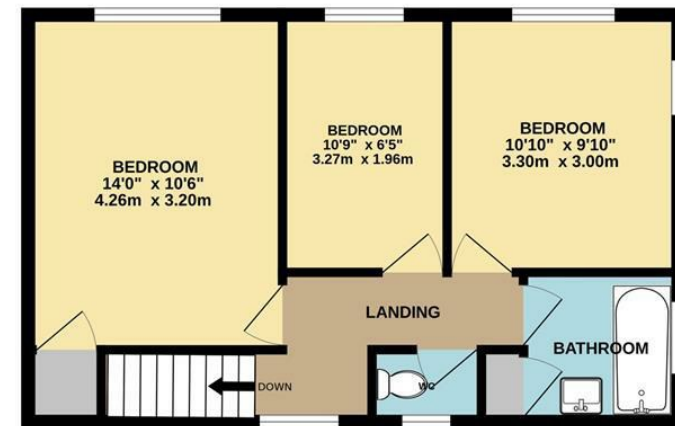
Energy Efficiency Rating		
	Current	Potential
Very energy efficient - lower running costs		
(92 plus) A		
(81-91) B		
(69-80) C		75
(55-68) D	58	
(39-54) E		
(21-38) F		
(1-20) G		
Not energy efficient - higher running costs		
England & Wales	EU Directive 2002/91/EC	



GROUND FLOOR



1ST FLOOR



Whilst every attempt has been made to ensure the accuracy of the floorplan contained here, measurements of doors, windows, rooms and any other items are approximate and no responsibility is taken for any error, omission or mis-statement. This plan is for illustrative purposes only and should be used as such by any prospective purchaser. The services, systems and appliances shown have not been tested and no guarantee as to their operability or efficiency can be given.
Made with Metropix ©2024



These particulars are believed to be accurate but they are not guaranteed and do not form a contract. Neither Jordan Fishwick nor the vendor or lessor accept any responsibility in respect of these particulars, which are not intended to be statements or representations of fact and any intending purchaser or lessee must satisfy himself by inspection or otherwise as to the correctness of each of the statements contained in these particulars. Any floorplans on this brochure are for illustrative purposes only and are not necessarily to scale.

Offices at: Chorlton, Didsbury, Disley, Hale, Glossop, Macclesfield, Manchester Deansgate, Manchester Whitworth Street, New Mills, Sale, Wilmslow and Withington

14 Market Street, Disley, Cheshire, SK12 2AA

01663 76 78 78

disley@jordanfishwick.co.uk

www.jordanfishwick.co.uk